



## Progetto LIFE:

"Serchio river alimented well - fields integrated rehabilitation"



**TASK 1**  
**Action 1.1:**

Characterization  
of the area

**LAND USE MAP**  
Statistic elaboration

**3**

Scale 1:25.000

may 2005

### Legend

#### Wells

- Domestic servant
- Drinkable
- Industrial
- Unusable
- Irrigation use
- Piezometric wells
- N.C.

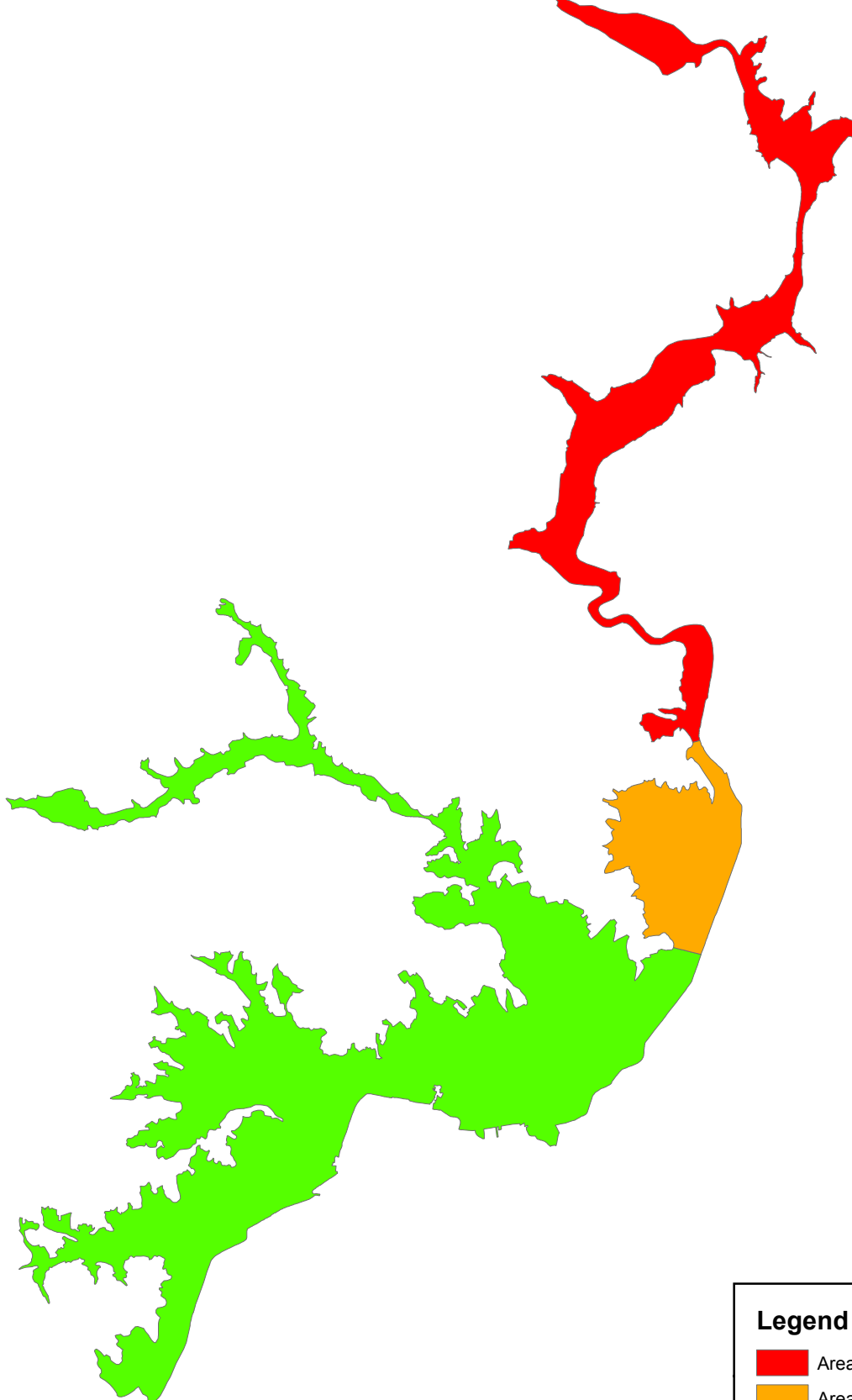
--- Golena

Detailed basin study area

#### Land use

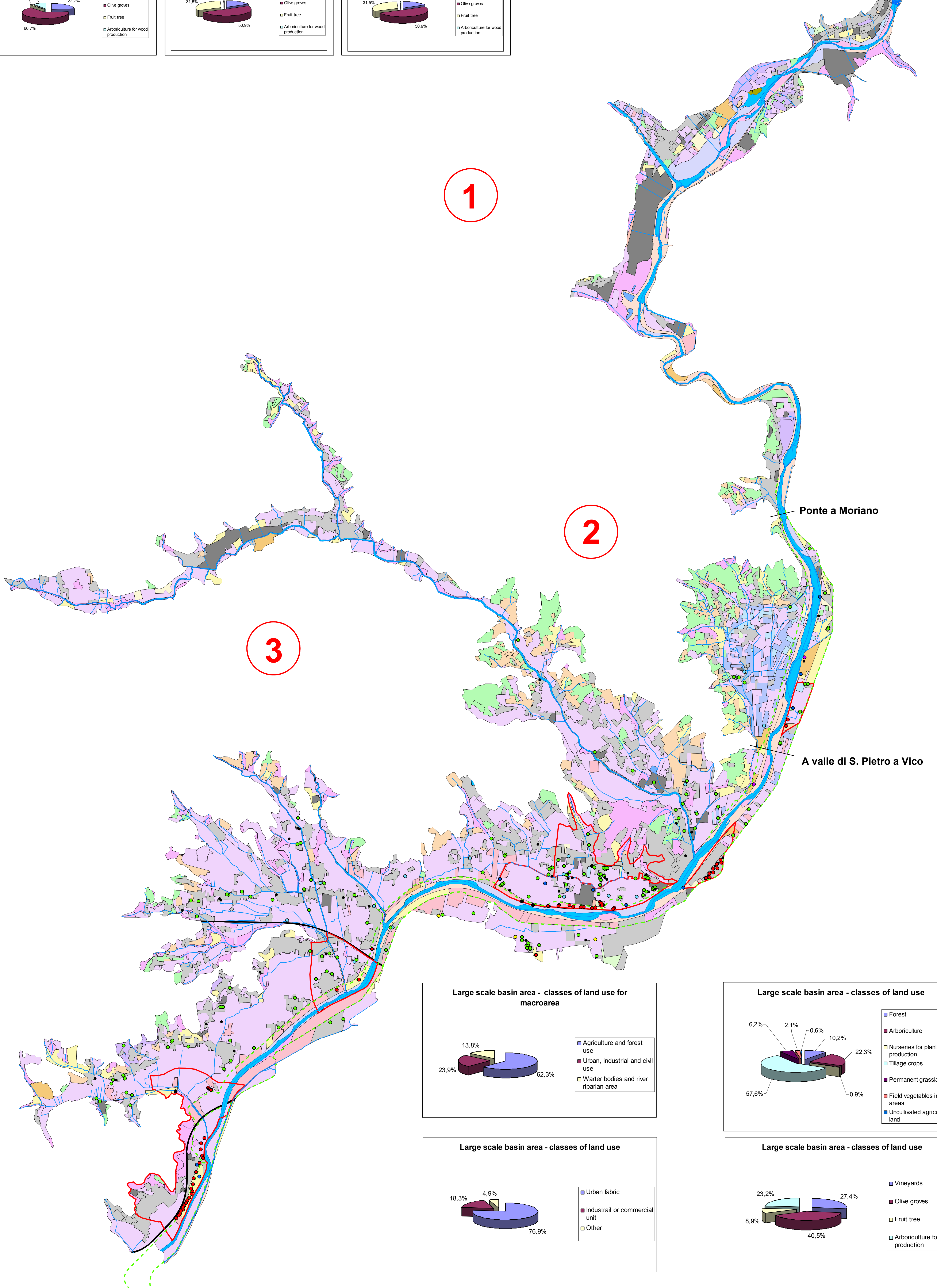
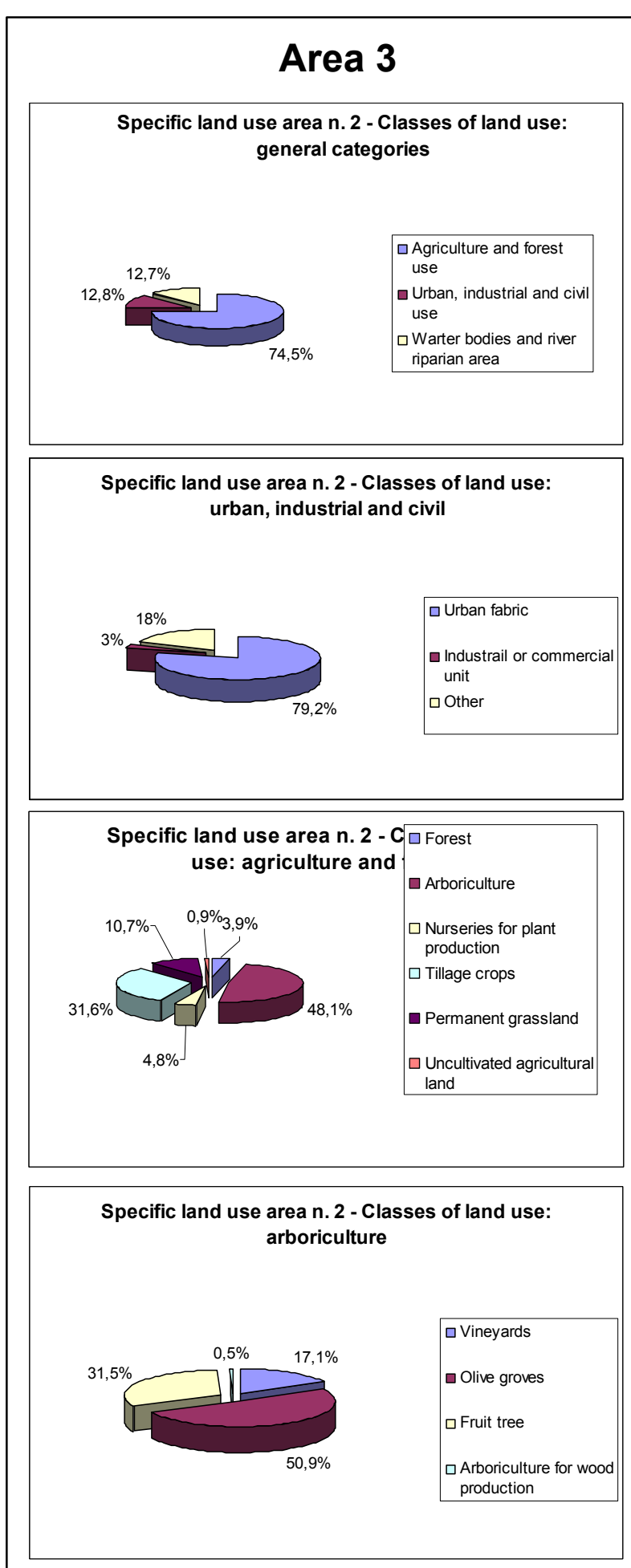
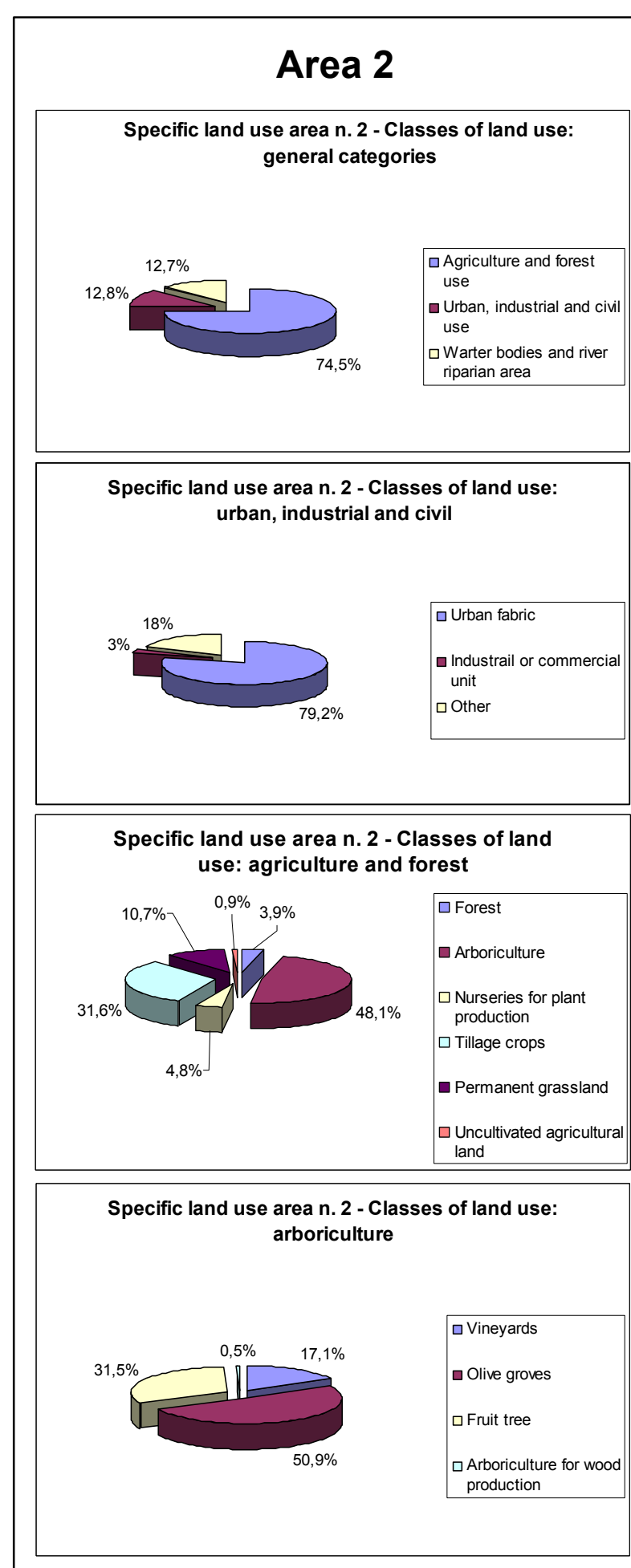
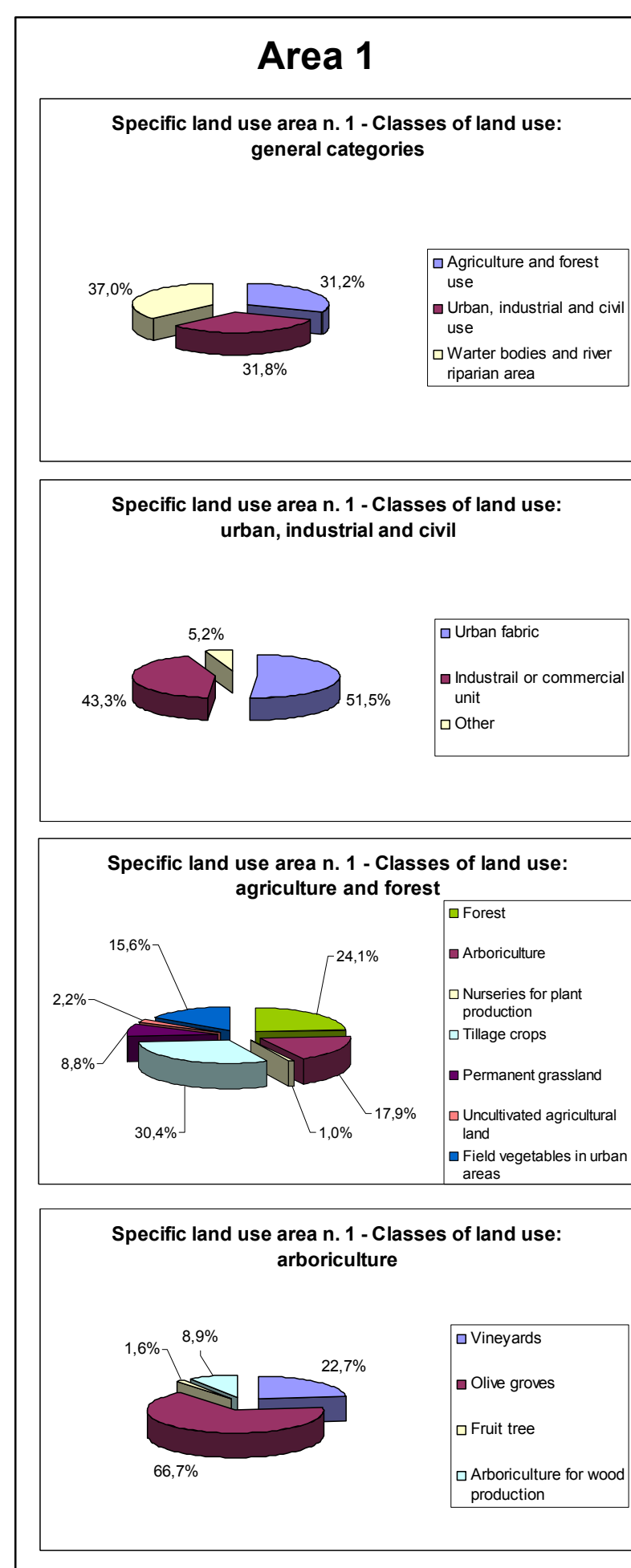
URBAN AND INDUSTRIAL AREA	Area (ha)	%
Urban fabric	955,2	18,38
Industrial or commercial unit	227,2	4,37
Road and rail networks		
Dump site	1,5	0,03
Quarries	43,3	0,83
Non-agricultural land	3,8	0,07
WATER BODY AND RIVER RIPARIAN AREA		
Water course	290,4	5,59
Riparian vegetation	250,5	4,82
Beachs, dunes and sands	52,9	1,02
Sparsely vegetated areas	109,8	2,11
Artificial lake	8,9	0,17
Hydroelectric reservoir's	5,9	0,11
AGRICULTURAL AND FORESTRY AREA		
Forest	330,0	6,35
Tillage crops	1864,8	35,87
Nurseries for plant production	7,7	0,15
Greenhouses	21,1	0,41
Permanent grassland	201,0	3,87
Field vegetables in urban areas	68,6	1,32
Uncultivated agricultural land	20,5	0,39
Arboriculture		
Vineyards	198,0	3,81
Olive groves	293,0	5,64
Fruit tree	64,7	1,25
Arboriculture for wood production	167,6	3,22

### Specific land use areas



#### Legend

- Area 1
- Area 2
- Area 3



**1**

**2**

**3**

